

**Project Info**

 06 February 2020

 CC5™

 # 125m<sup>2</sup>

 Longitudinal Layer

 S.G.N.P. Mumbai

 Accords Associates



**SGNP**  
SANJAY GANDHI NATIONAL PARK  
MUMBAI



**Complete Photo**



**Upper Tank**

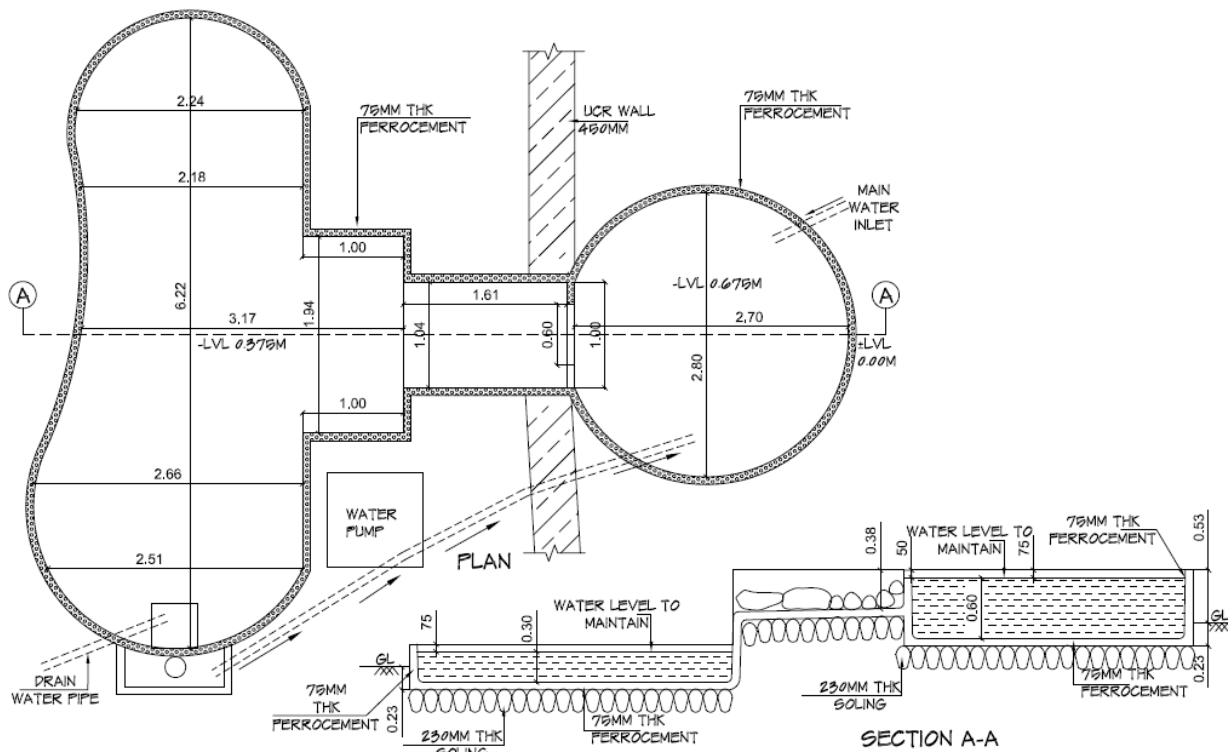


**Bottom Tank**

Concrete Canvas 5mm was used to line concrete water body structure constructed for drinking water storage for animals inside Zoo Area at Sanjay Gandhi National Park, Borivali, Mumbai.

As per drawing provided by the client, the work was done in one working day with team of 8 labours and 1 supervisor. We simply lay the concrete canvas layers side-by-side and stick it with silicon sealant adhesive and at the end corners of work we fixed with Hilti GX3 nailing machine. The work was allotted to M/S. Sanbros Spares Pvt. Ltd. Nagpur under M/S. Accords Associates, Mumbai & Public Works Department. In total 50sqm of CC5 was used to get done this work. Concrete Canvas having low washout rate & water impermeable saves the water seepage to ground and do not harm water content with adding impurities & without changing pH value of water.

In same area, we have done another work of Drain under same contractor M/S Accord Associates. In total 75sqm of Concrete canvas 5mm was used to line the excavated drain portion in 1 day. Both works done in 2 days, with using 125sqm of Concrete Canvas 5mm thick. Following are drawings provided by M/S Accords Associates with working photos of installation.



Excavated area



Lined CC drain